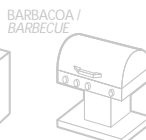
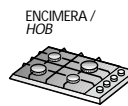


Serie / Series

CAL-20703

Tamaño reducido / Reduced size

1



Grifo valvulado salida inclinada izquierda
Left sloping outlet safety tap



PULSADO / PUSHING (mm)	CAUDAL / FLOW (1)
3,5	250

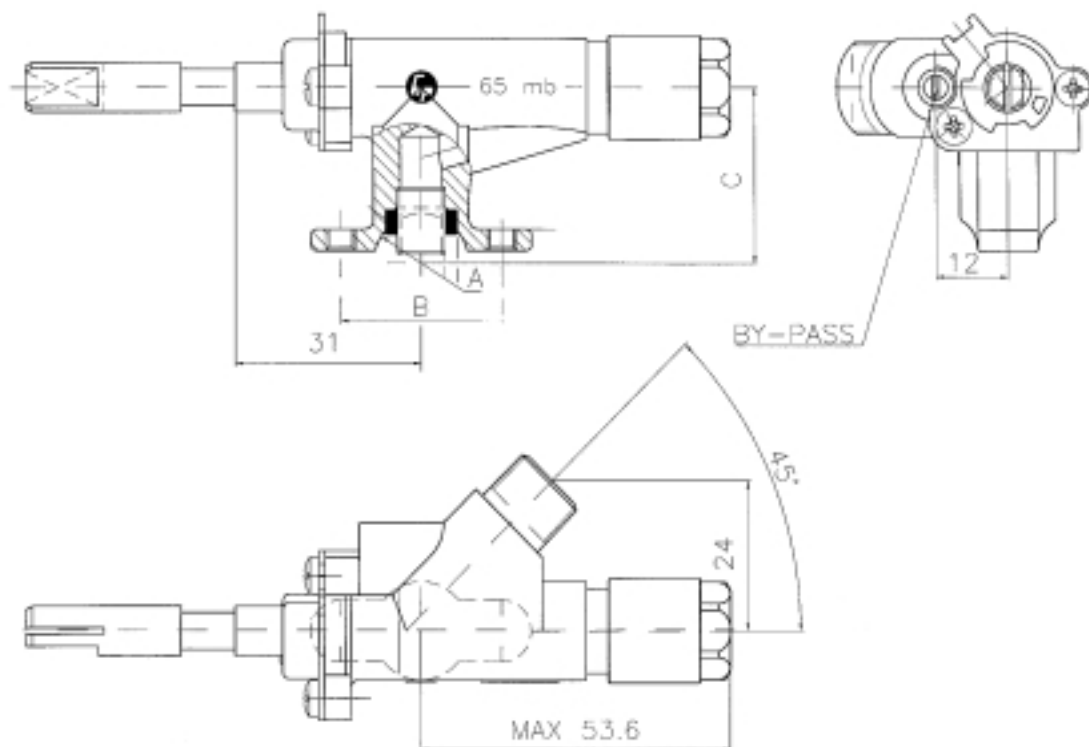
(1) Caudal en L/hora aire con 1 mB de pérdida de carga.
(1) Flow in L/hour air with 1 mB pressure drop.

Ø RAMPA / GAS RAIL Ø	ALTURA / HEIGHT (1)
A (mm.)	C (mm.)
14	28,5
16	28
	28,5
	30
18	28
	28,5

Distancia entre agujeros brida Distance between clamp holes
B (mm.)
21
23
27
30

(1) Altura eje perno al centro rampa.
(1) Height from the spindle's axis to the gas rail center.

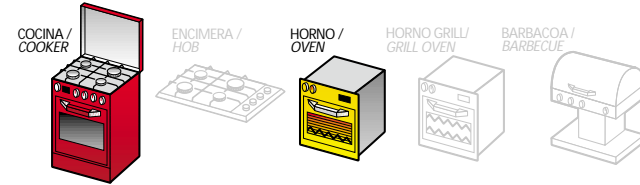
■ Cotas más importantes
■ Main outside dimensions



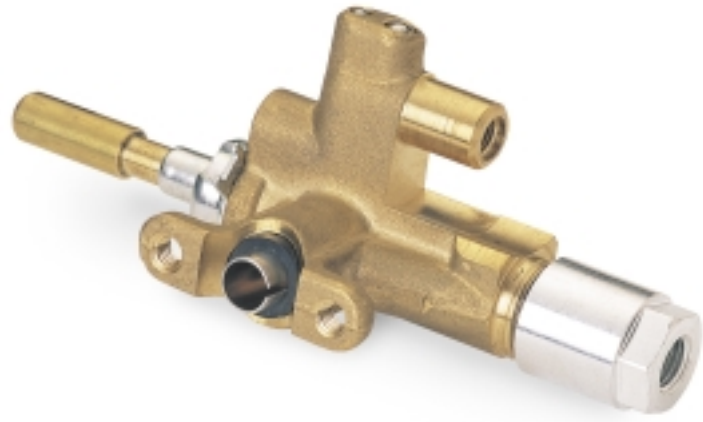
Serie / Series
CAL-20703

Tamaño reducido / *Reduced size*

3



Grifo valvulado salida paralela derecha
Right parallel outlet safety tap



PULSADO / PUSHING (mm)	CAUDAL / FLOW (1)
3,5	250

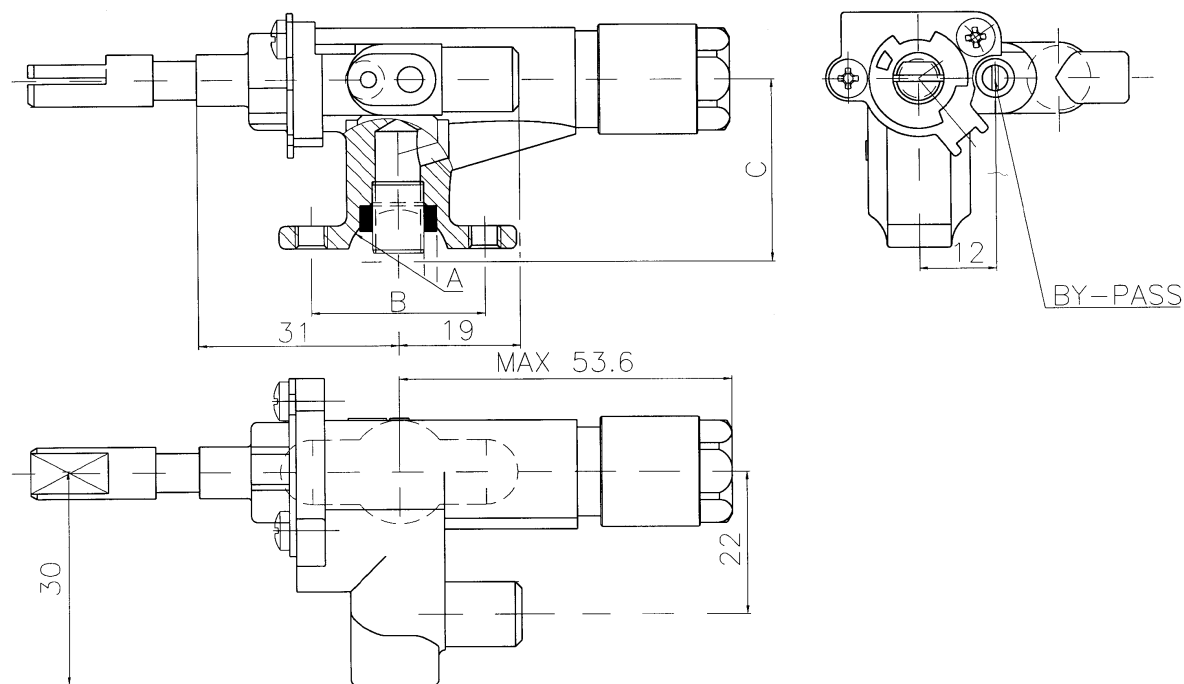
(1) Caudal en L/hora aire con 1 mB de pérdida de carga.
(1) Flow in L/hour air with 1 mB pressure drop.

Ø RAMPA / GAS RAIL Ø	ALTURA / HEIGHT (1)
A (mm.)	C (mm.)
16	23
	28
	28,5

(1) Altura eje perno al centro rampa.
(1) Height from the spindle's axis to the gas rail center.

Distancia entre agujeros brida Distance between clamp holes
B (mm.)
21
23
27
30

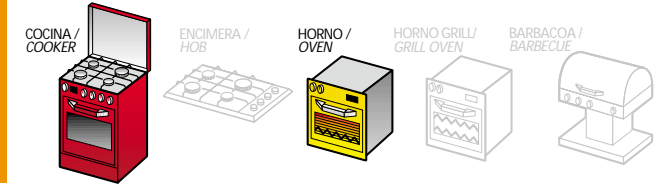
■ Cotas más importantes
■ Main outside dimensions



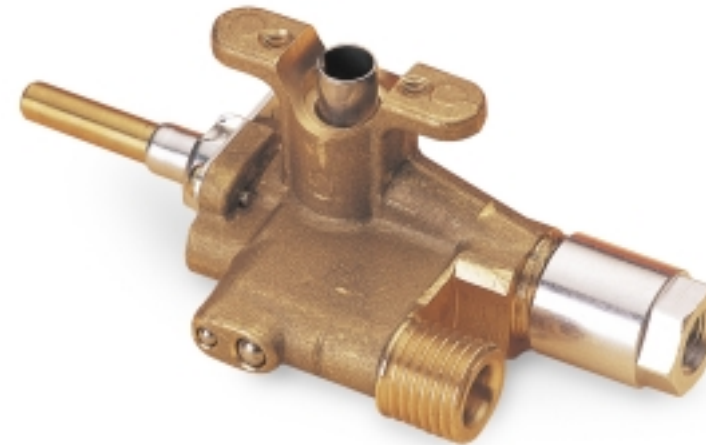
Serie / Series
CAL-20703

Tamaño reducido / *Reduced size*

4



Grifo valvulado salida paralela izquierda
Left parallel outlet safety tap



PULSADO / PUSHING (mm)	CAUDAL / FLOW (1)
3,5	250

(1) Caudal en L/hora aire con 1 mB de pérdida de carga.
(1) Flow in L/hour air with 1 mB pressure drop.

Ø RAMPA / GAS RAIL Ø	ALTURA / HEIGHT (1)
A (mm.)	C (mm.)
16	23
	28
	28,5
	38,5
18	30

(1) Altura eje perno al centro rampa.
(1) Height from the spindle's axis to the gas rail center.

Distancia entre agujeros brida Distance between clamp holes
B (mm.)
21
23
27
30

■ Cotas más importantes
■ Main outside dimensions

